

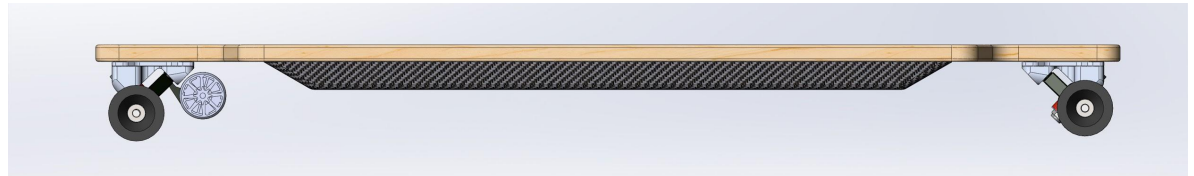
Electroboard with safety driving system



Tomilin Konstantin

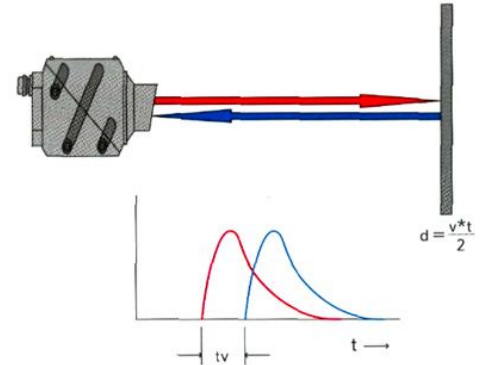
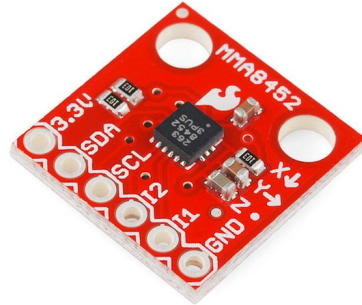
Structure

- ▶ Deck
- ▶ Chassis
- ▶ Wheel
- ▶ The joystick control
- ▶ System of electric propulsion systems
- ▶ Power supply



Security system

- ▶ Optimal acceleration and deceleration with the “normal mode”;
- ▶ “Emergency” stop engine when a rider isn’t on longboard.



Market

- ▶ Sport & hobbies
- ▶ Transport system
- ▶ Electric propulsion System



Existing analogues

- ▶ EVOLVE (1,4K €)
- ▶ Boosted (1,5K €) (kickstarter)
- ▶ Mellow drive (1,1K €)

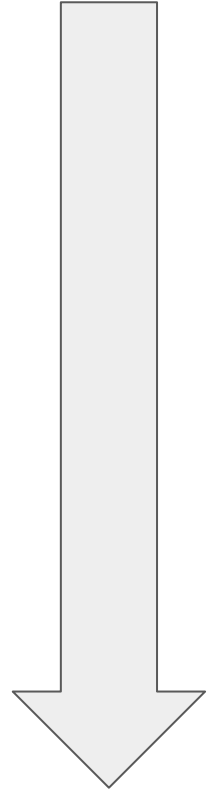


Product

- ▶ Mechanics longboard (deck, chassis, wheels);
- ▶ System of electric propulsion systems;
- ▶ Management system (a set of sensors, controller and remote)
- ▶ System analysis, (speed, trajectory, etc.)

Implementation plan

- ▶ Search professionals. Prototyping and initial development of a common view of the device and parallel development of the control system. Promotion of the project in the early stages of development;
- ▶ Debugging and manufacturing of equipment for production in deck and chassis. Refinement of the circuitry components for control systems, design and manufacture of PCB and electronics;
- ▶ Debugging software of the control system;
- ▶ Optimization of frame, chassis, electronics and software;
- ▶ Tests and collecting data for subsequent debugging;
- ▶ Debug of control systems.



The current results

- ▶ Set minimum characteristics
- ▶ Created model of the General form of the device
- ▶ Initiated the design and optimization of the model



Thank you for your



Tomilin Konstantin
konstantintomilin@yandex.ru
+7(929)105-24-85